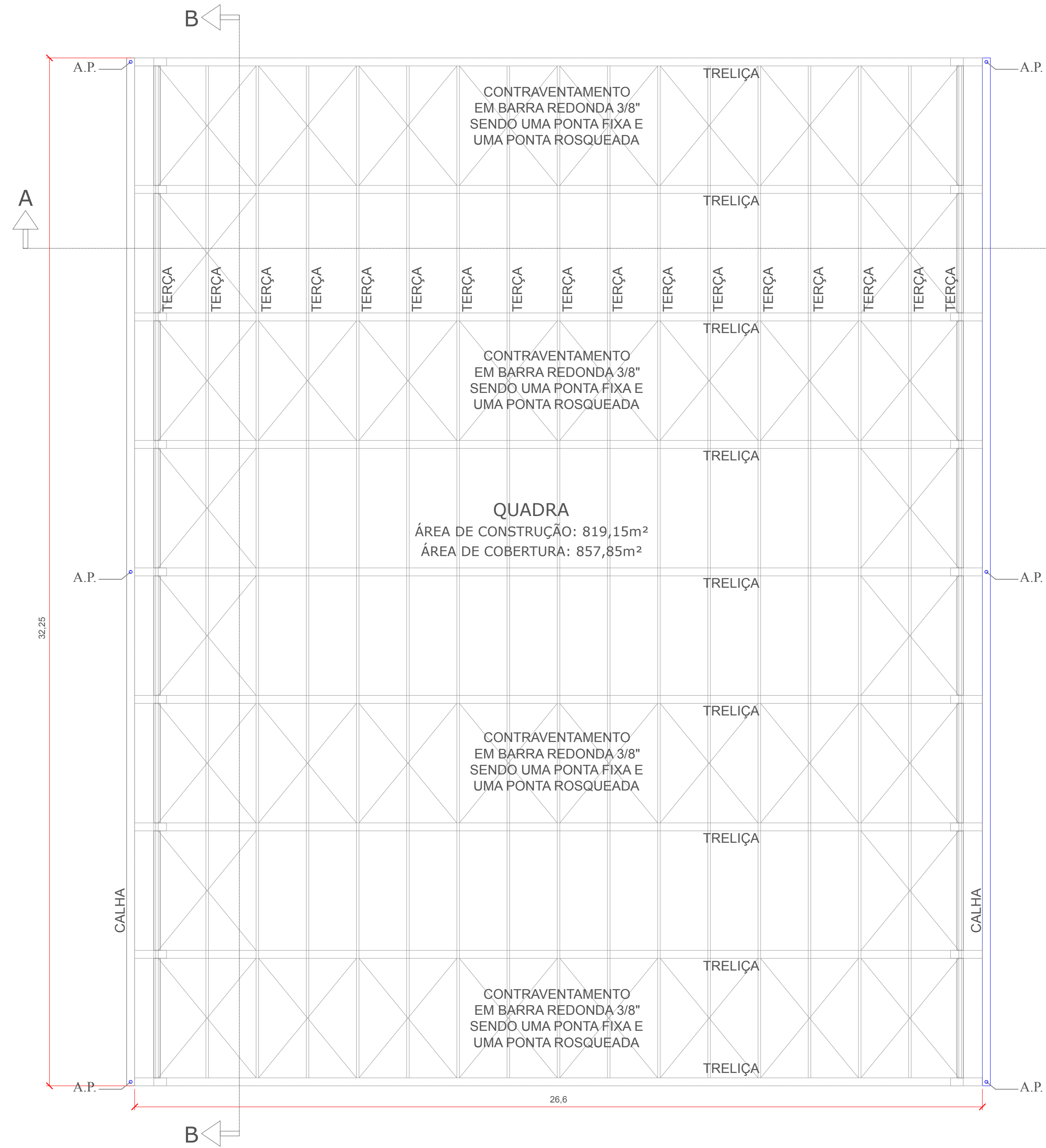
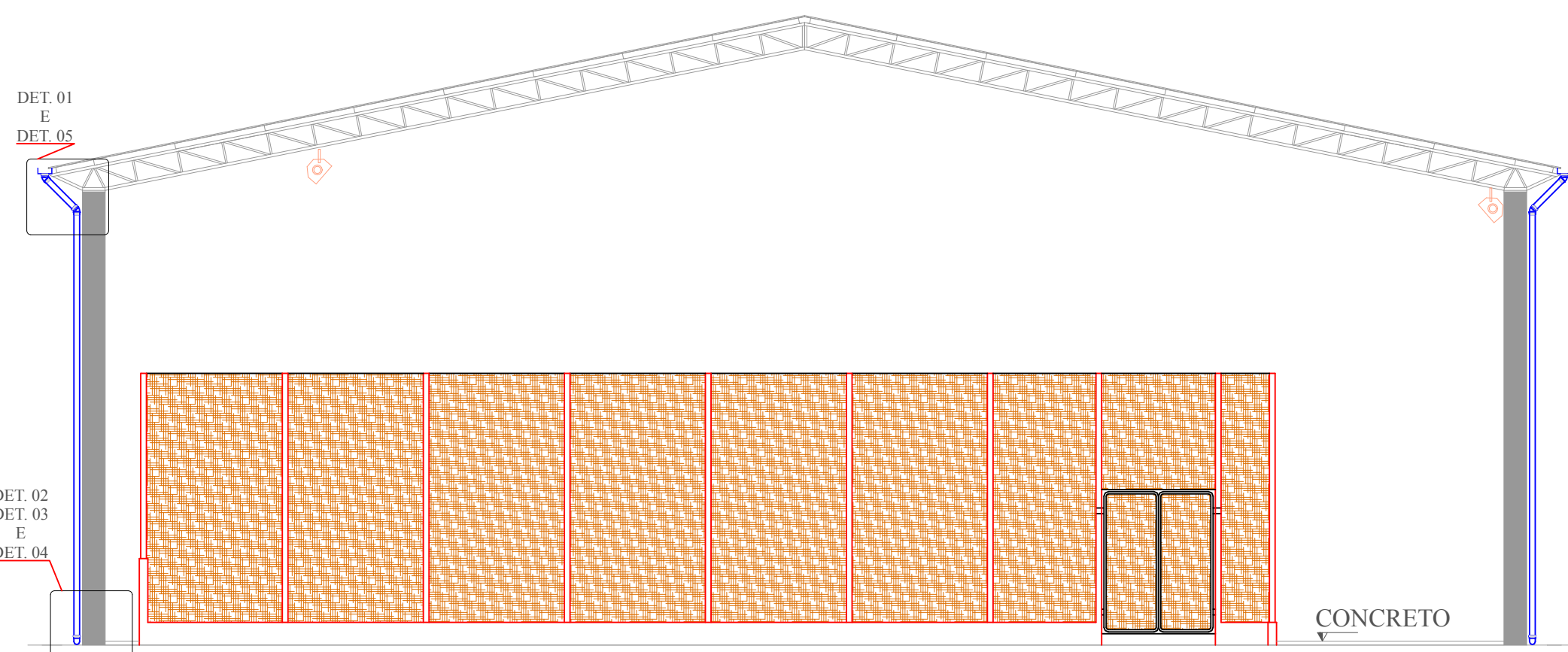


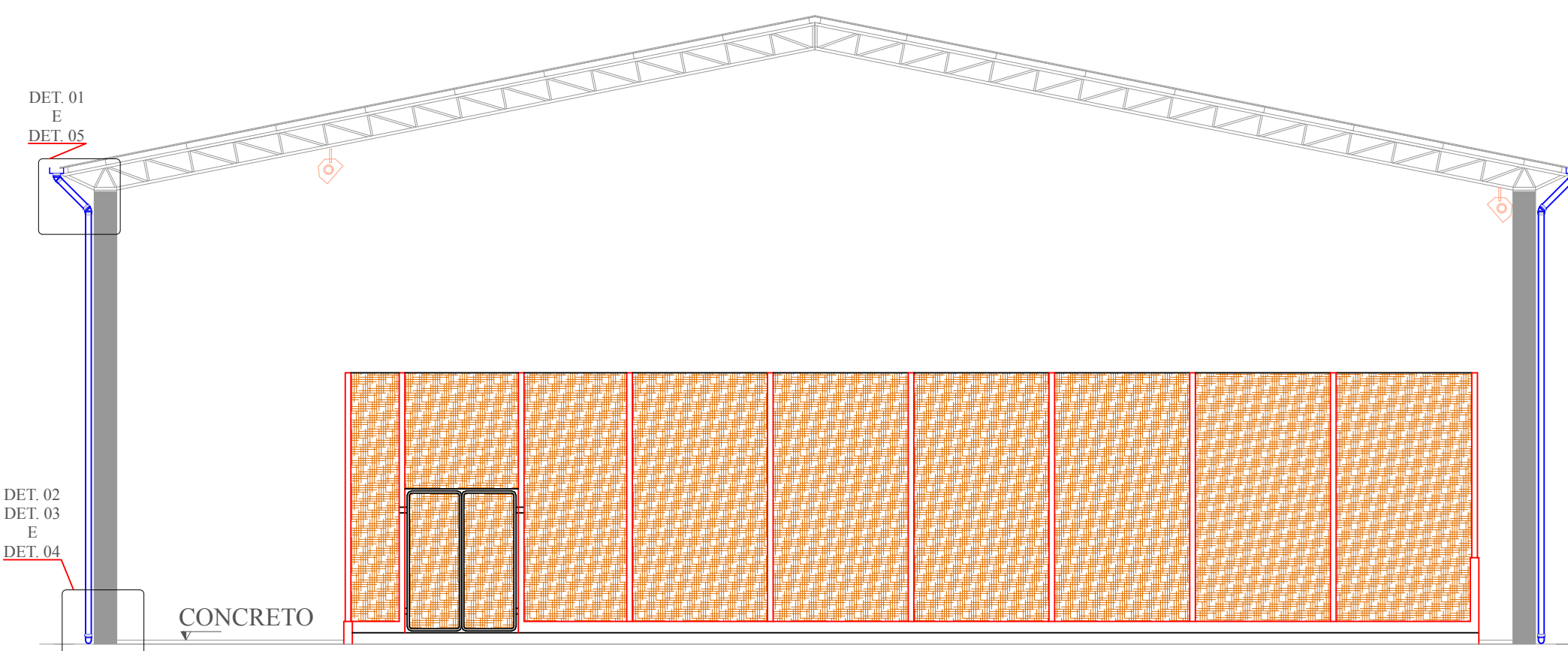
PLANTA BAIXA
ESCALA 1:100



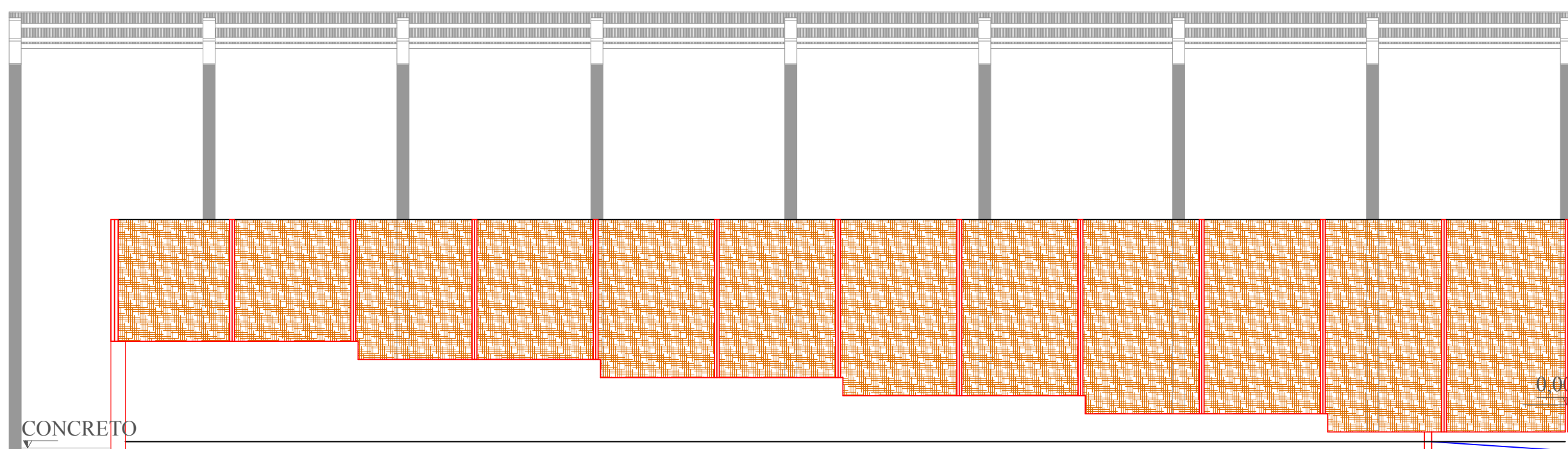
PLANTA BAIXA - COBERTURA
ESCALA 1:100



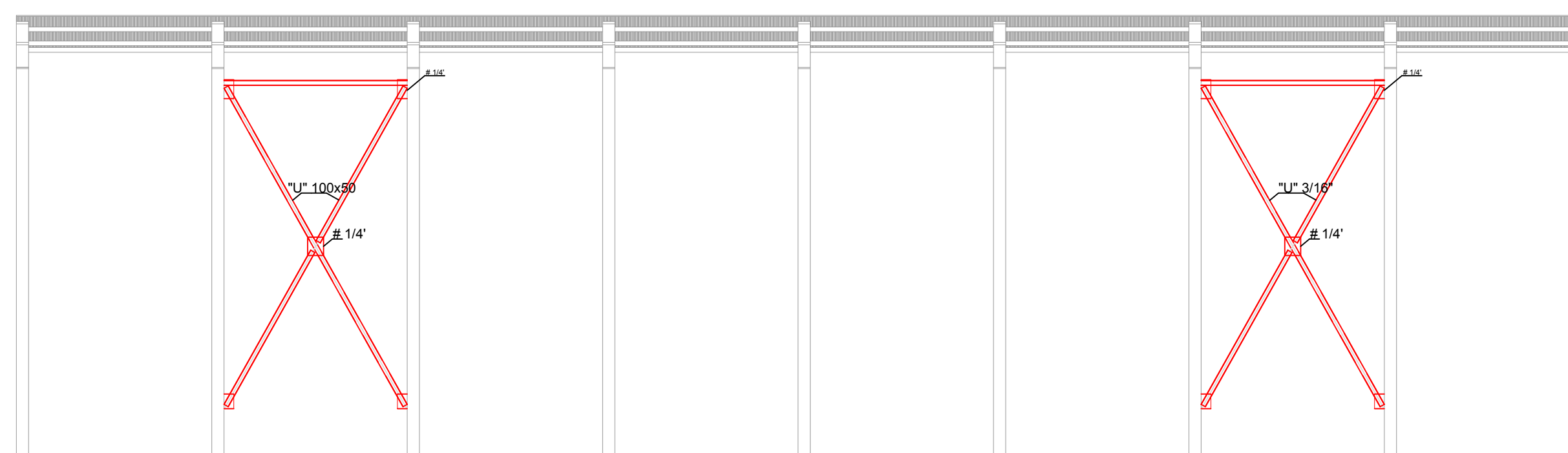
ELEVÇÃO (Rua Benedito Libanori)
Escala 1:100



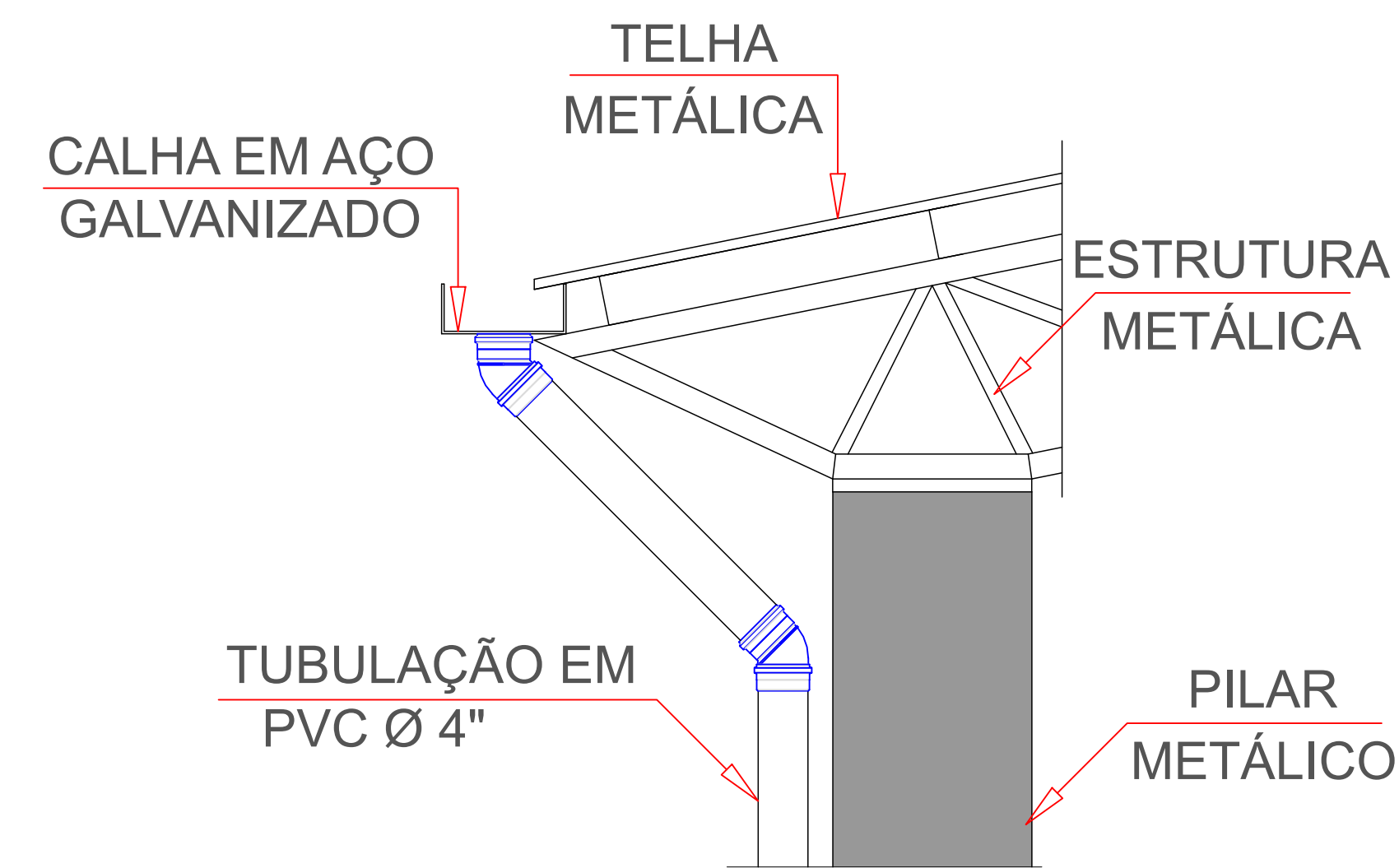
CORTE A-A
Escala 1:100



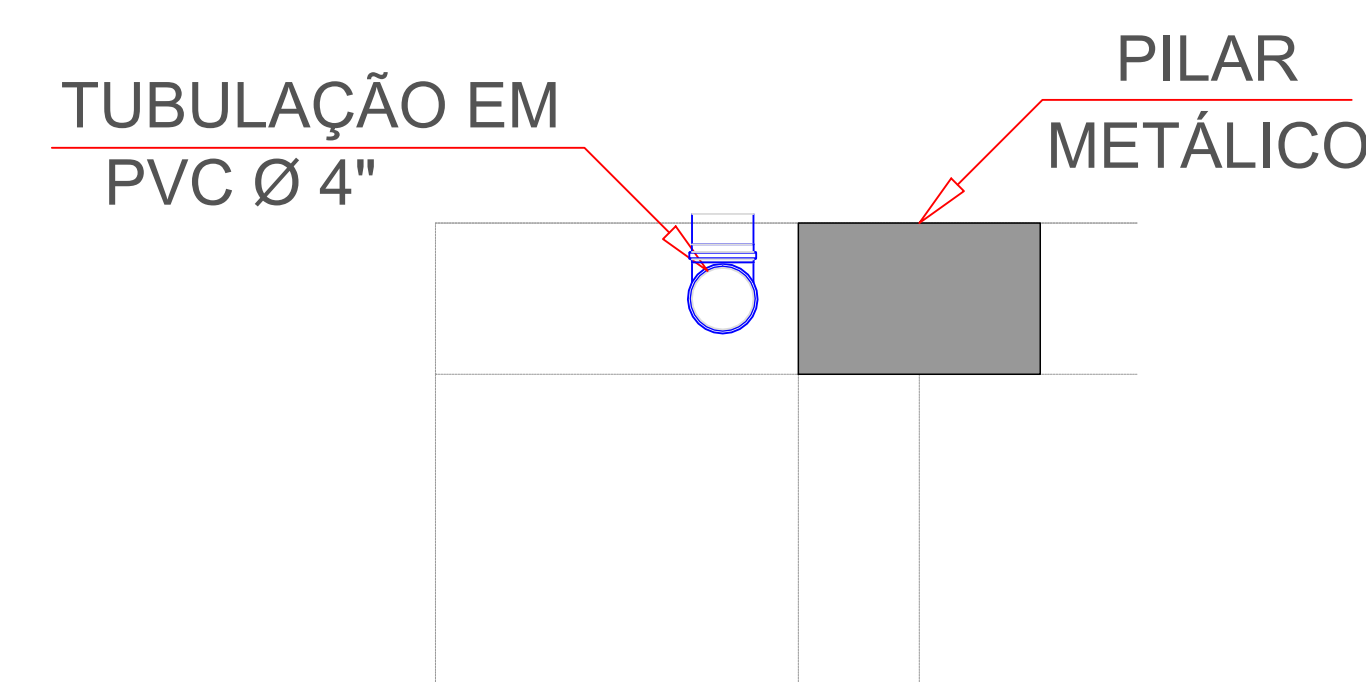
CORTE B-B
Escala 1:100



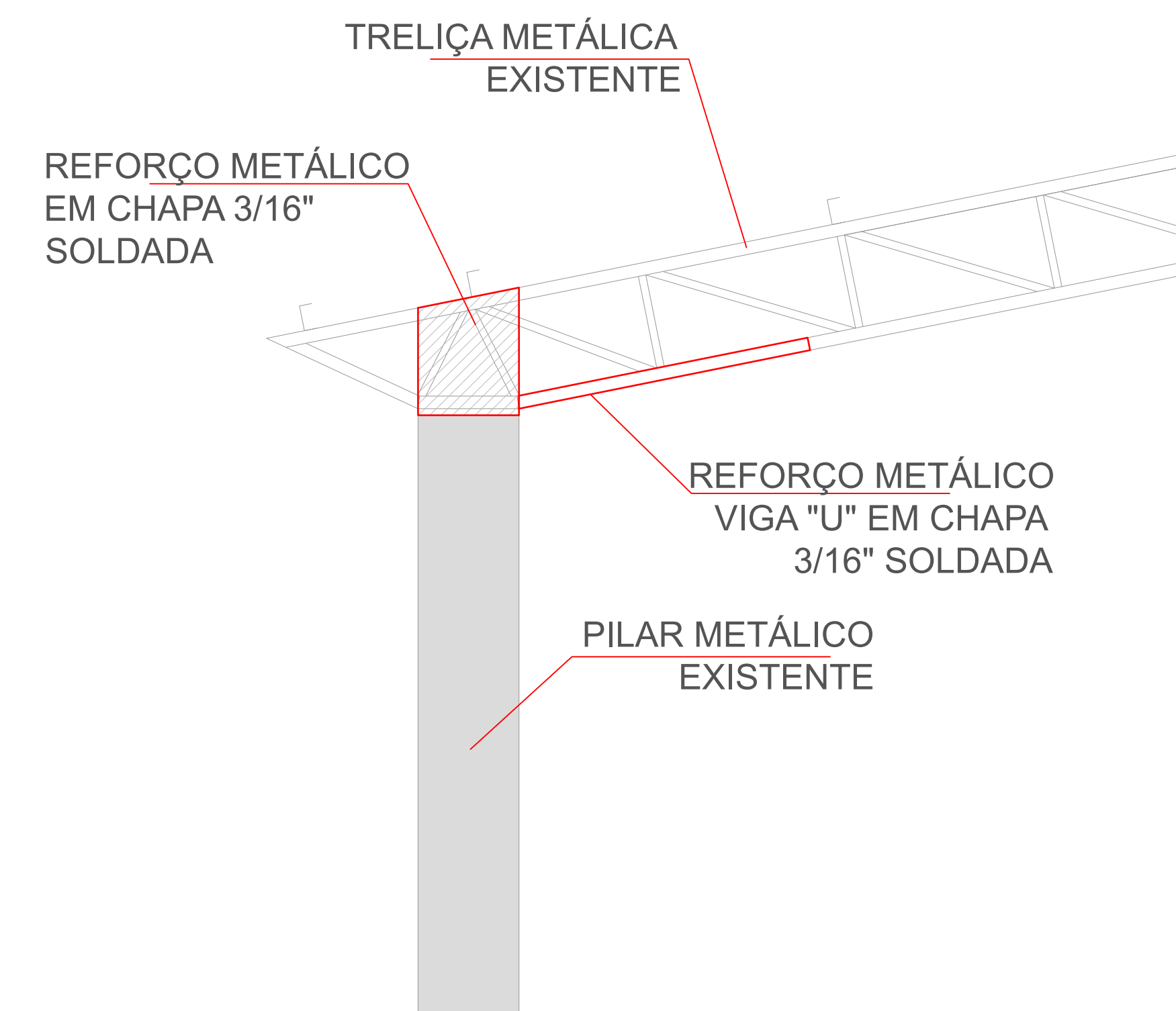
CORTE B - CONTRAVENTAMENTOS VERTICAIS 4 POSIÇÕES
Escala 1:100



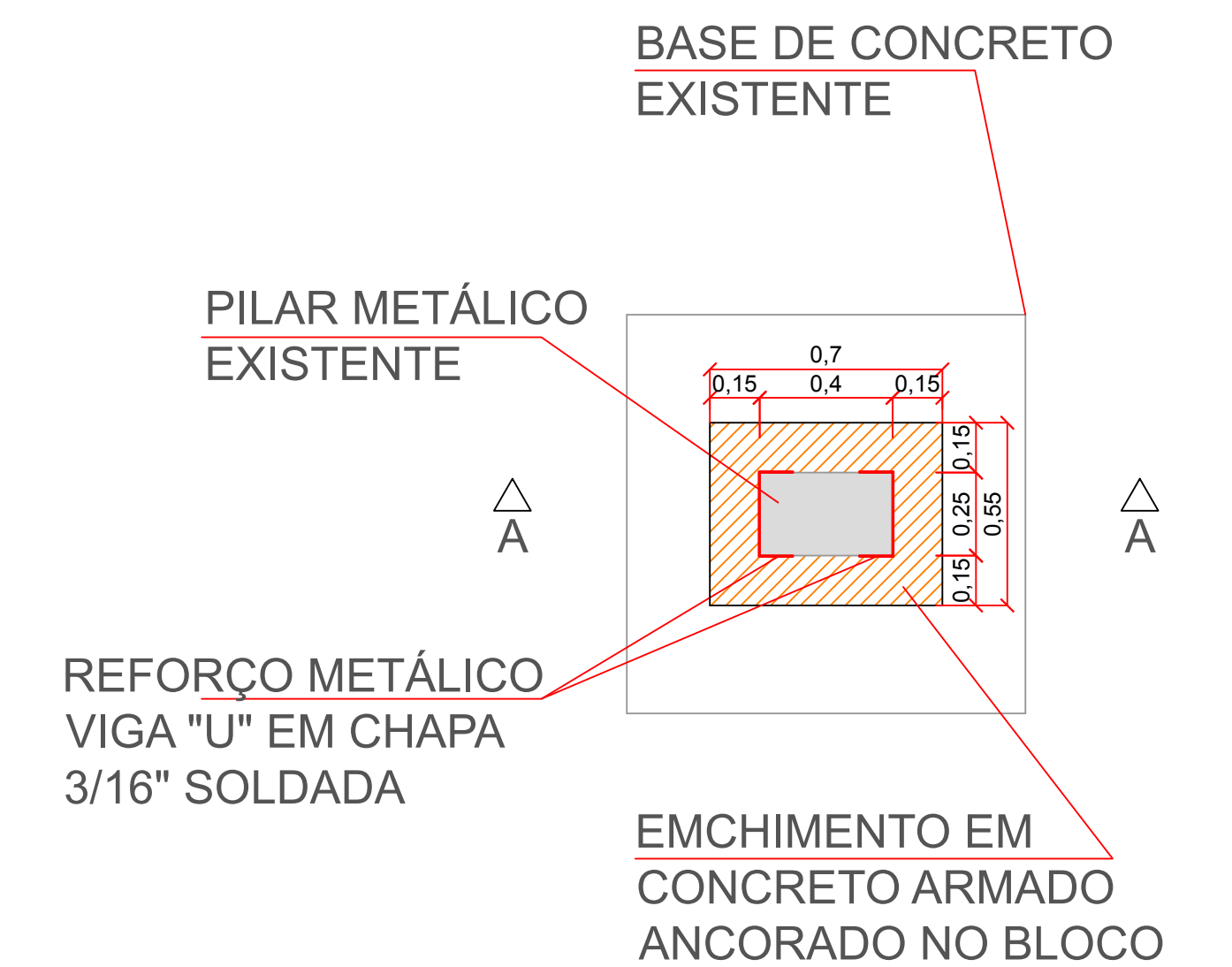
DETALHE 01
SEM ESCALA



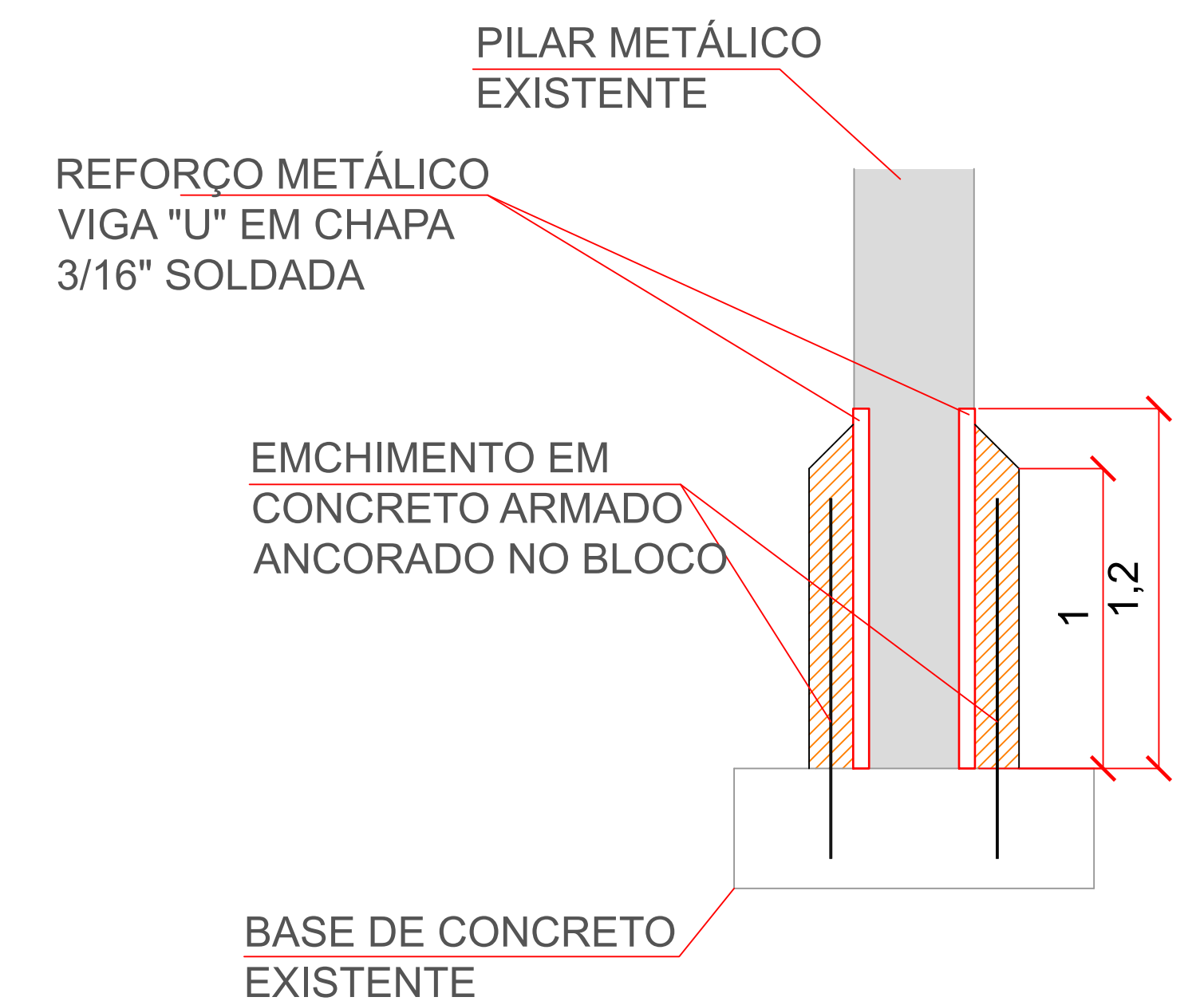
DETALHE 02
SEM ESCALA



DETALHE 05
SEM ESCALA



DETALHE 03 - PLANTA
SEM ESCALA



DETALHE 04 - CORTE AA
SEM ESCALA



MUNICÍPIO DE JAHU
SECRETARIA DE PROJETOS

Obra: COBERTURA DE QUADRA POLIESPORTIVA
Local: RUA BENEDITO LIBANORI - JD. PADRE AUGUSTO SANI - JAHU/ SP
Referência: REFORMA DE COBERTURA EM ESTRUTURA METÁLICA

ALESSANDRO RODRIGO SCUDILIO
SECRETÁRIO DE PROJETOS

GABRIEL HENRIQUE TROVÃO
ENGENHEIRO CIVIL

Desenho:	Escala:	Impresso:	Fl.
	Indicadas	Nov/2019	01/01